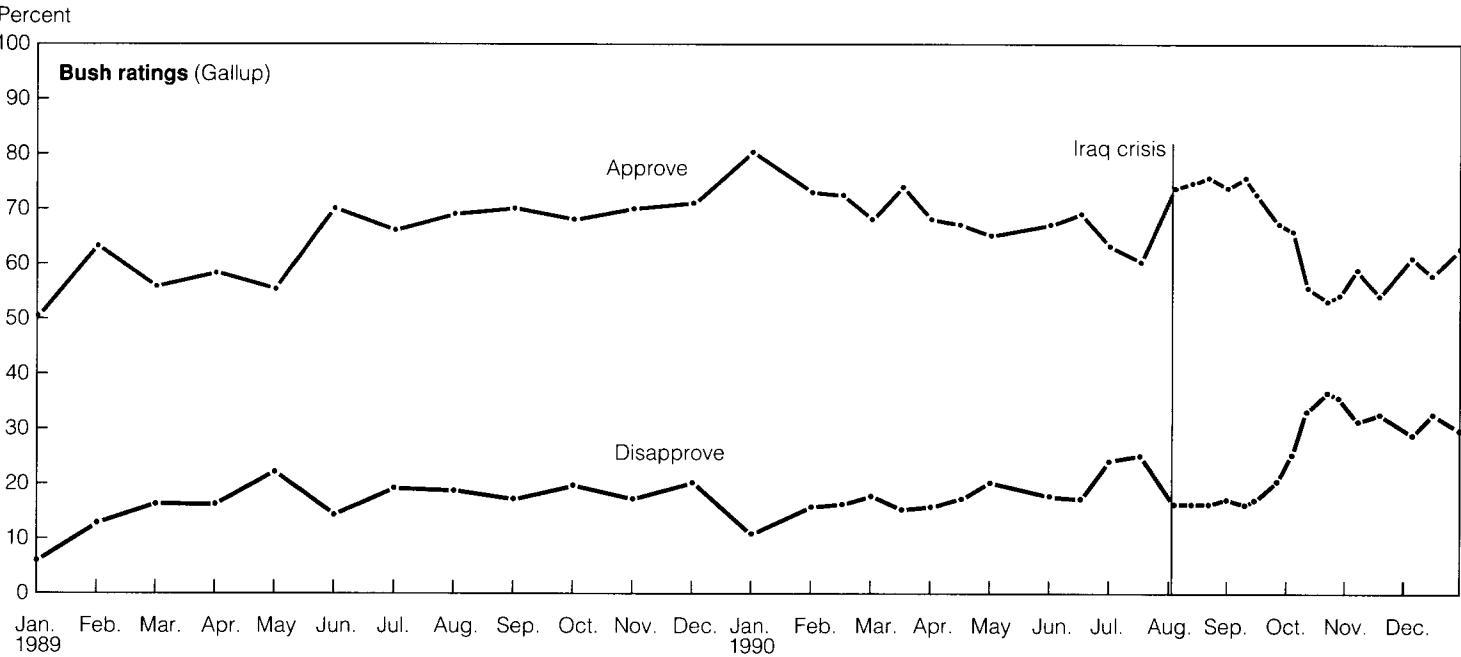


# RATING GEORGE BUSH

After a brief period of volatility, President Bush's ratings have settled at a high level, though off his peak. Presidents Eisenhower and Johnson enjoyed about the same high approval ratings as Bush at this point in their respective presidencies; only President Kennedy enjoyed higher ratings.

Question: **Do you approve or disapprove of the way George Bush is handling his job as president?**



Source: Surveys by the Gallup Organization, latest that of December 13-16, 1990.

		Approve		Disapprove				Approve		Disapprove	
<b>First Rating</b>											
1989	Gallup	1/24-26	51%	6%		ABC/WP	10/5-7	65%	31%		
						CBS	10/7	62	27		
						CBS/NYT	10/8-10	60	20		
<b>Last Six Months</b>						ABC/WP	10/10-14	56	40		
1990	Gallup	7/6-8	63	24		Gallup	10/11-14	56	33		
	NBC/WSJ	7/6-10	67	22		YCS/Time/CNN	10/15-17	53	37		
	Gallup	7/19-22	60	25		Wirthlin	10/16-17	51	37		
	ABC/WP	7/19-24	65	33		Gallup	10/18-21	53	37		
	Wirthlin	7/23-25	63	29		NBC/WSJ	10/19-21	59	32		
	YCS/Time/CNN	7/24-25	61	30		Gallup	10/25-28	54	36		
	CBS News	8/7-8	66	22		NBC/WSJ	10/30-31	56	32		
	NYT	8/9-10	72	19		CBS/NYT	10/28-31	52	37		
	Gallup/Newsweek	8/9-10	75	15		Gallup	11/1-4	59	32		
	Gallup	8/9-12	74	16		ABC/WP	11/2-4	59	38		
	Gallup	8/16-19	75	16		Wirthlin	11/8-11	60	32		
	CBS/NYT	8/16-19	76	15		CBS/NYT	11/13-15	55	33		
	Wirthlin	8/20-22	78	16		LA Times	11/14	61	34		
	YCS/Time/CNN	8/23	74	20		Gallup/Newsweek	11/15-16	58	33		
	Gallup	8/23-26	76	16		Gallup	11/15-18	54	33		
	Gallup	8/30-9/2	74	17		ABC/WP	11/30-12/2	63	33		
	ABC/WP	9/6-9	75	21		Gallup	11/29-12/2	61	29		
	Gallup	9/10-11	76	16		Gallup	12/6-9	58	33		
	Gallup	9/14-16	73	17		Gallup/Newsweek	12/7-8	63	28		
	NBC/WSJ	9/15-18	75	15		NBC/WSJ	12/8-11	57	36		
	Wirthlin	9/17-19	75	19		LA Times	12/8-12	64	29		
	Gallup	9/27-30	67	20		CBS/NYT	12/9-11	61	27		
	Gallup	10/3-4	66	25		Gallup	12/13-16	63	30		
	Times Mirror	10/4-7	55	28							

## BUSH AND HIS PREDECESSORS

	After 6th Month	After 12th Month	After 23rd Month
Truman (4/45 took office)	75%*	50%	60%
Eisenhower (1/53)	71	68	63
Kennedy (1/61)	71	77	74
Johnson (11/63)	75	69	63
Nixon (1/69)	65	61	52
Ford (8/74)	39	46	—
Carter (1/77)	67	52	51
Reagan (1/81)	60	47	41
Bush (1/89)	66	80	63

Note: \* = rating after 7th month in office.

Source: Surveys by the Gallup Organization, latest that of December 13-16, 1990.