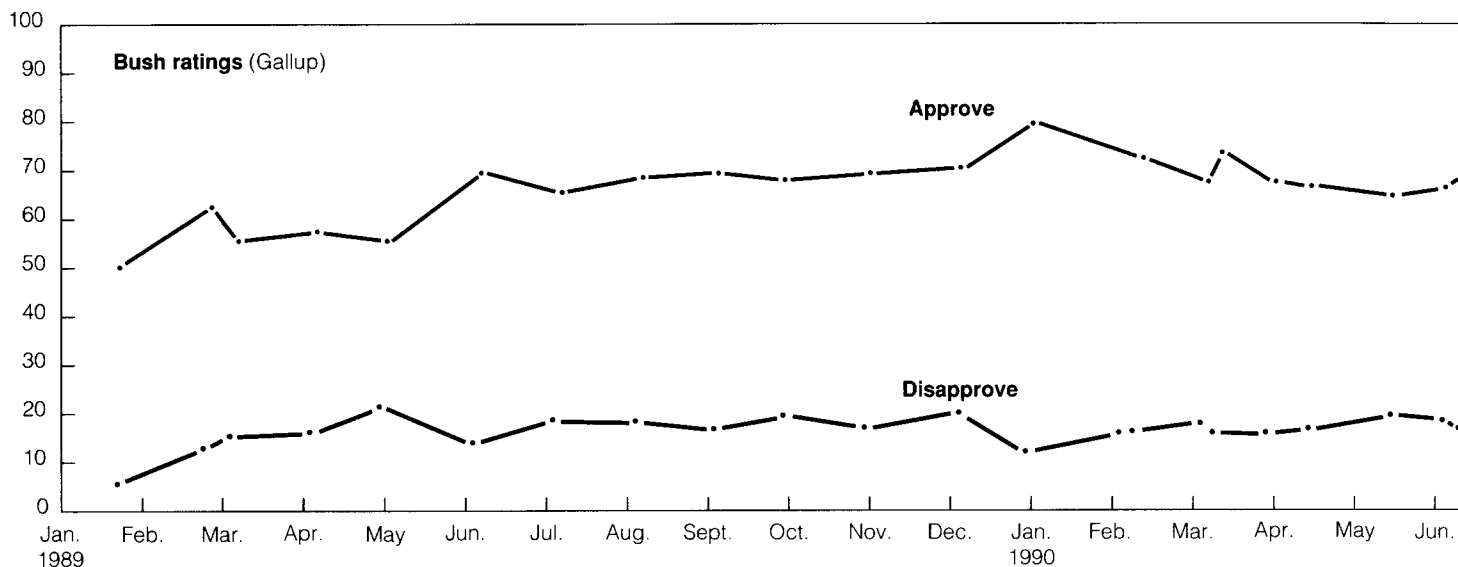


THE BUSH BAROMETER

President Bush's job approval ratings remain high and stable, and, with the exception of Dwight Eisenhower, his ratings surpass those of his recent predecessors at the same point in their presidencies.

Question: **Do you approve or disapprove of the way George Bush is handling his job as president?**



Source: Surveys by the Gallup Organization, latest that of October 3-6, 1991.

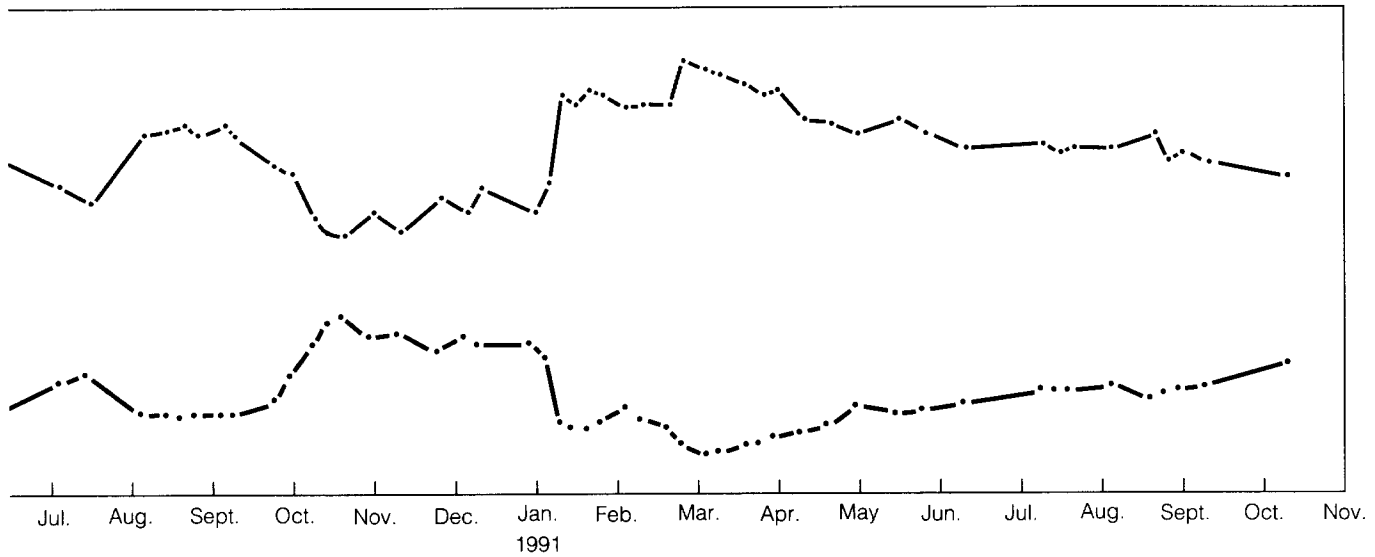
First Rating	Approve	Disapprove
1989 Gallup	1/24-26	51% 6%
Recent Ratings		
1991 CBS/NTT	2/12-13	78 13
Gallup	2/14-17	80 14
LA Times	2/15-17	82 14
Gallup	2/21-24	80 13
CBS/NTT	2/24-25	85 10
NBC/WSJ	2/26-27	85 11
NYT	2/28-3/1	86 10
Gallup	2/28-3/3	89 8
CBS/NTT	3/4-6	88 8
YCS/Time/CNN	3/7	86 9
Gallup	3/7-10	87 8
LA Times	3/9-11	84 13
NBC/WSJ	3/15-19	81 13
Gallup	3/28-30	82 11
CBS/NTT	4/1-3	80 12
Gallup	4/4-6	83 12
ABC/WP	4/5-9	80 18
LA Times	4/6-9	82 16
YCS/Time/CNN	4/10-11	76 18
Gallup	4/11-14	77 13
YCS/Time/CNN	4/24	73 20
Gallup	4/25-28	76 15
Gallup	5/2-5	74 19
CBS/NTT	5/7-8	81 12

Approve	Disapprove
YCS/Time/CNN 5/8	73% 18%
Gallup 5/16-19	77 16
ABC/WP 5/30-6/2	76 21
Gallup 5/30-6/2	74 17
CBS/NTT 6/3-6	75 16
Gallup 6/13-16	71 19
NBC/WSJ 6/22-25	76 21
LA Times 6/28-30	74 23
Gallup 7/11-14	72 21
YCS/Time/CNN 7/17-18	69 23
Gallup 7/18-21	70 21
ABC 7/22-25	70 26
Gallup 7/25-28	70 21
NBC/WSJ 7/26-29	67 25
Gallup 8/8-11	71 22
LA Times 8/20	73 23
Gallup 8/23-25	74 18
YCS/Time/CNN 8/27-28	68 22
Gallup 8/29-9/3	69 22
CBS/NTT 9/3-5	70 19
Gallup 9/5-8	70 21
ABC 9/13-15	69 26
Gallup 9/13-15	68 22
NBC/WSJ 9/20-24	64 27
LA Times 9/21-24	65 29
Gallup 9/26-29	66 25
Gallup 10/3-6	65 27

BUSH AND HIS PREDECESSORS			
	After 6th Month	After 12th Month	After 33rd Month
Truman (4/45 took office)	75%*	50%	—
Eisenhower (1/53)	71	68	77*
Kennedy (1/61)	71	77	58
Johnson (11/63)	75	69	47
Nixon (1/69)	65	61	52
Ford (8/74)	39	46	—
Carter (1/77)	67	52	31
Reagan (1/81)	60	47	46
Bush (1/89)	66	80	65

Note: * Rating after 7th month in office for Truman and 34th month in office for Eisenhower.
Source: Surveys by the Gallup Organization, latest that of October 3-6, 1991.

Bush's ratings on handling of the nation's economy continue to lag far behind his ratings on foreign policy.



Question: **Do you approve or disapprove of the way Bush is handling ... ?**

Approve of the way Bush is handling...

The nation's economy

April 1989	61%
May	61%
June	61%
August	63%
October	64%
January 1990	61%
February	58%
March	65%
May	52%
July	46%
August	55%
September	53%
October	38%
November*	36%
January 1991	45%
March	49%
June	46%
July	36%
September	42%

Foreign affairs

April 1989	67%
May	65%
June	69%
August	63%
October	72%
January 1990	75%
February	75%
March	70%
May	68%
July	70%
September	74%
January 1991	76%
March	85%
June	70%
July	66%
September	73%

Note: * Sample = likely voters.
Source: Surveys by ABC News/Washington Post, latest that of September 13-15, 1991.