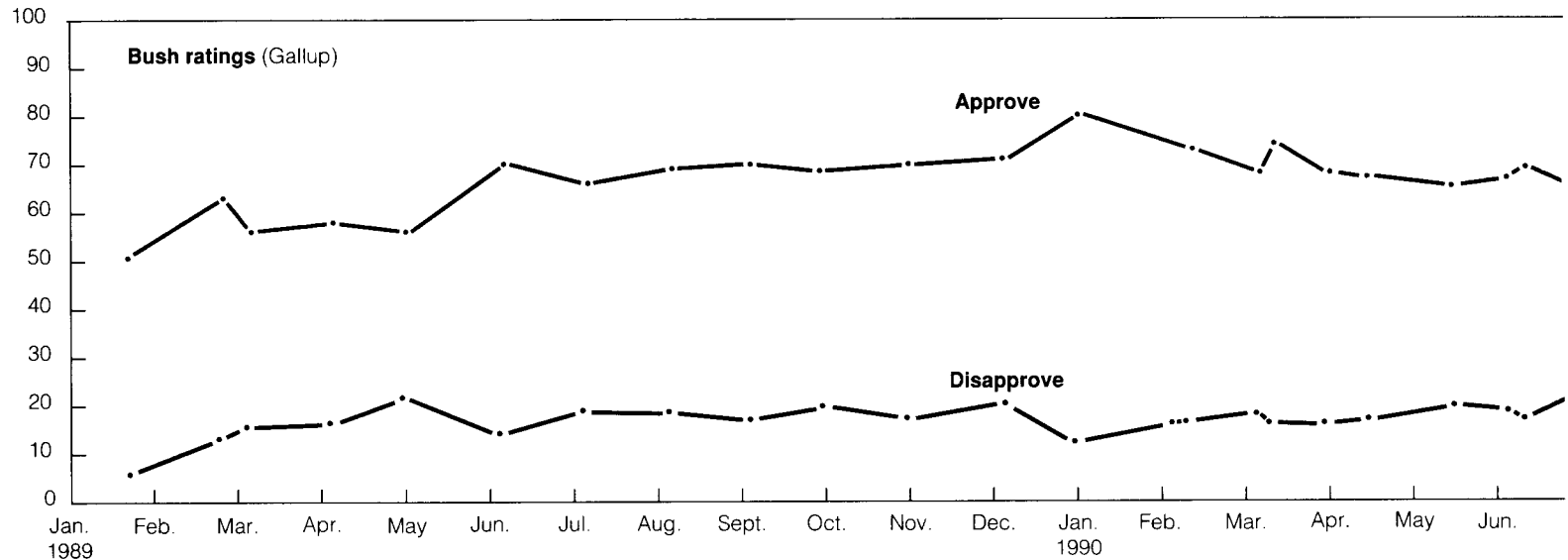


THE BUSH BAROMETER

A review of George Bush's ratings in the first three years of his presidency reveals some significant ups and downs in the last two years. His ratings now are about where they were in October 1990.

Question: Do you approve or disapprove of the way George Bush is handling his job as president?



Source: Surveys by the Gallup Organization, latest that of December 12-15, 1991.

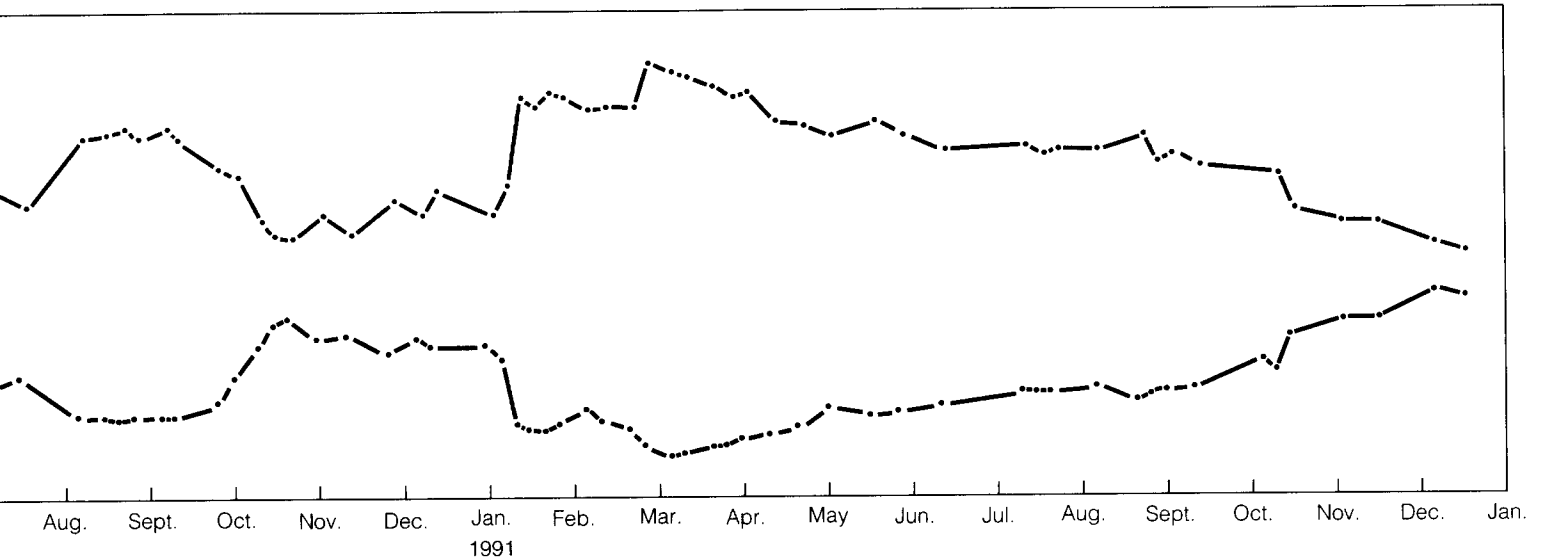
First rating	Approve Disapprove	
	Approve	Disapprove
1989 Gallup	1/24-26	51% 6%
Recent ratings		
1991 CBS/NTT	4/1-3	80 12
Gallup	4/4-6	83 12
ABC/WP	4/5-9	80 18
LA Times	4/6-9	82 16
YCS/Time/CNN	4/10-11	76 18
Gallup	4/11-14	77 13
YCS/Time/CNN	4/24	73 20
Gallup	4/25-28	76 15
Gallup	5/2-5	74 19
CBS/NTT	5/7-8	81 12
YCS/Time/CNN	5/8	73 18
Gallup	5/16-19	77 16
ABC/WP	5/30-6/2	76 21
Gallup	5/30-6/2	74 17
CBS/NTT	6/3-6	75 16
Gallup	6/13-16	71 19
NBC/WSJ	6/22-25	76 21
Gallup	7/11-14	72 21
YCS/Time/CNN	7/17-18	69 23
Gallup	7/18-21	70 21
ABC	7/22-25	70 26
Gallup	7/25-28	70 21
NBC/WSJ	7/26-29	67 25
Gallup	8/8-11	71 22
Gallup	8/23-25	74 18
YCS/Time/CNN	8/27-28	68 22
NBC/WSJ	8/28	70 21

	Approve Disapprove	
	Approve	Disapprove
Gallup	8/29-9/3	68% 22%
CBS/NTT	9/3-5	70 19
Gallup	9/5-8	70 21
ABC	9/13-15	69 26
Gallup	9/13-15	68 22
YCS/Time/CNN	9/19	65 26
NBC/WSJ	9/20-24	64 27
LA Times	9/21-24	65 29
Gallup	9/26-29	66 25
Gallup	10/3-6	65 27
Times Mirror	10/3-6	61 28
YCS/Time/CNN	10/10	60 30
Gallup	10/10-13	66 28
CBS/NTT	10/15-18	67 24
Gallup	10/17-20	66 26
ABC/WP	10/16-21	65 31
Gallup/Newsweek	10/24-25	55 30
ABC/WP	10/24-29	59 39
NBC/WSJ	10/25-29	63 30
Gallup	10/31-11/3	59 33
Times Mirror	10/31-11/10	55 33
Gallup	11/7-10	56 36
Gallup	11/14-17	56 36
CBS/NTT	11/18-22	51 37
NBC	11/20-21	51 39
LA Times	11/21-24	53 41
Gallup	11/21-24	52 39
YCS/Time/CNN	11/26/91	46 45
Gallup	12/5-8	52 42
NBC/WSJ	12/6-9	52 41
ABC/WP	12/11-15	47 50
Gallup	12/12-15	50 41

	BUSH AND HIS PREDECESSORS		
	After 12th month	After 24th month	After 35th month
Truman (4/45 took office)	50%	—	36%*
Eisenhower (1/53)	68	69	75
Kennedy (1/61)	77	76	—
Johnson (11/63)	69	64	44
Nixon (1/69)	61	56	50
Ford (8/74)	46	—	—
Carter (1/77)	52	43	54
Reagan (1/81)	47	35	54
Bush (1/89)	80	83	50

Note: * Rating after 36th month in office.
Source: Surveys by the Gallup Organization, latest that of December 12-15, 1991.

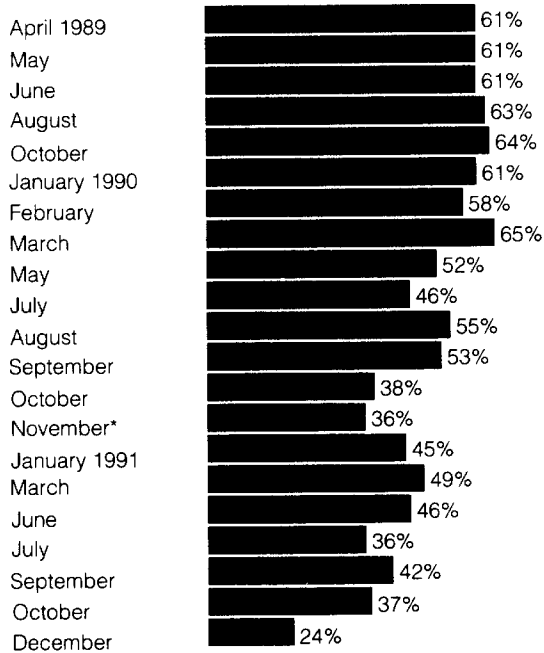
Bush's low marks on his handling of the economy contrast sharply with his long-stable and positive ratings for foreign policy. But are these specific ratings commentaries on Bush, or on foreign policy and the economy generally?



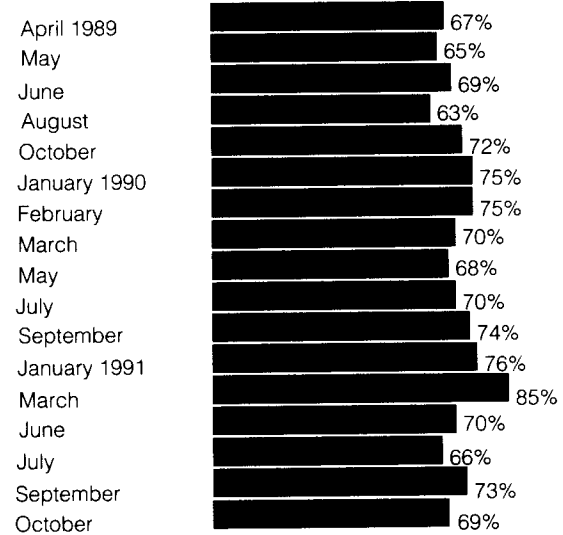
Question: **Do you approve or disapprove of the way Bush is handling...?**

Approve of the way Bush is handling...

The nation's economy



Foreign affairs



Note: * Sample = likely voters.

Source: Surveys by ABC News/Washington Post, latest that of December 11-15, 1991.