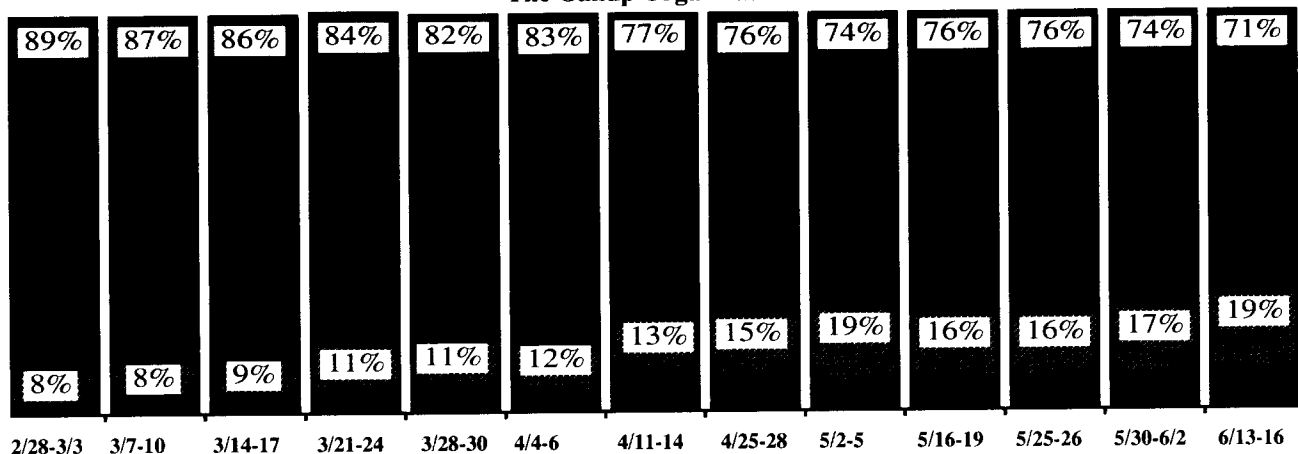
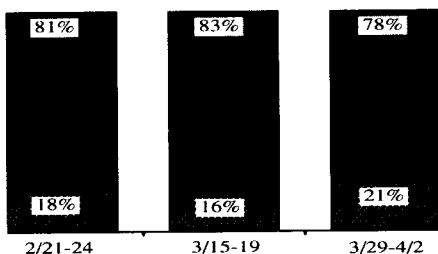


POLITICS WATCH '92: THE PRESIDENT AND THE PARTIES

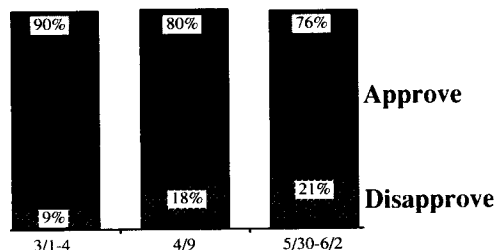
BUSH—OVERALL APPROVAL
The Gallup Organization



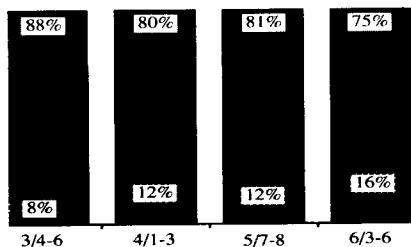
Louis Harris & Associates



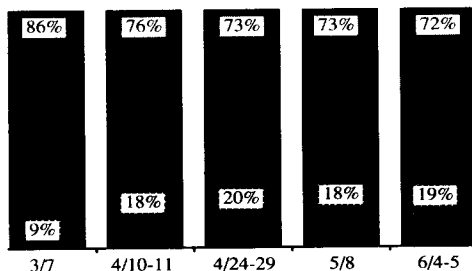
ABC News/Washington Post



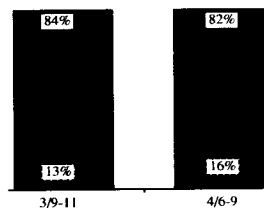
CBS News/New York Times



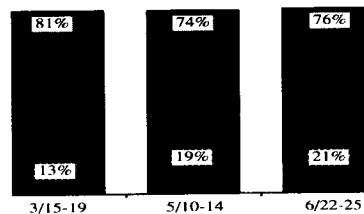
Time/CNN/Yankelovich



Los Angeles Times



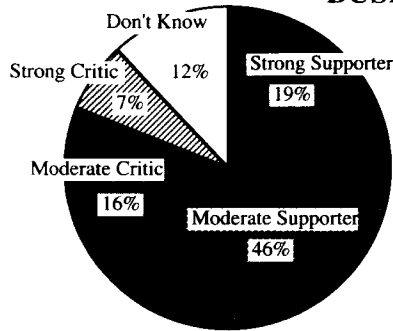
NBC News/Wall Street Journal



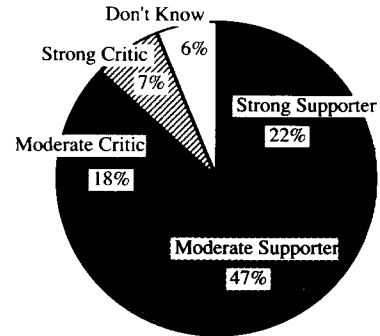
Questions: [Asked by Gallup, ABC/WP, and CBS/NYT] "Do you approve or disapprove of the way George Bush is handling his job as president?" [Asked by LAT and NBC/WSJ] "Generally speaking, ...?" [And by Time/CNN/Yankelovich] "In general,..." [The Harris question was] "How would you rate the overall job President Bush is doing as President—excellent, pretty good, only fair, or poor?"

Note: In addition to those listed, Gallup also conducts polls for Newsweek—not included due to overlapping.

BUSH—STRENGTH OF SUPPORT



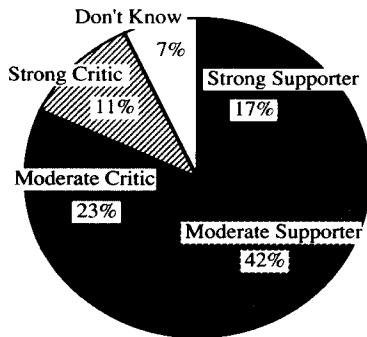
February, 1989



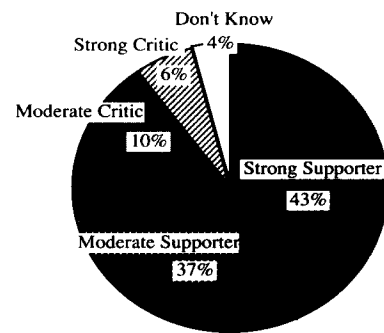
February, 1990

Question: How do you feel about President Bush—at the present time, would you describe yourself as a strong supporter, a moderate supporter, a moderate critic, or a strong critic?

Note: Surveys by the Roper Organization.



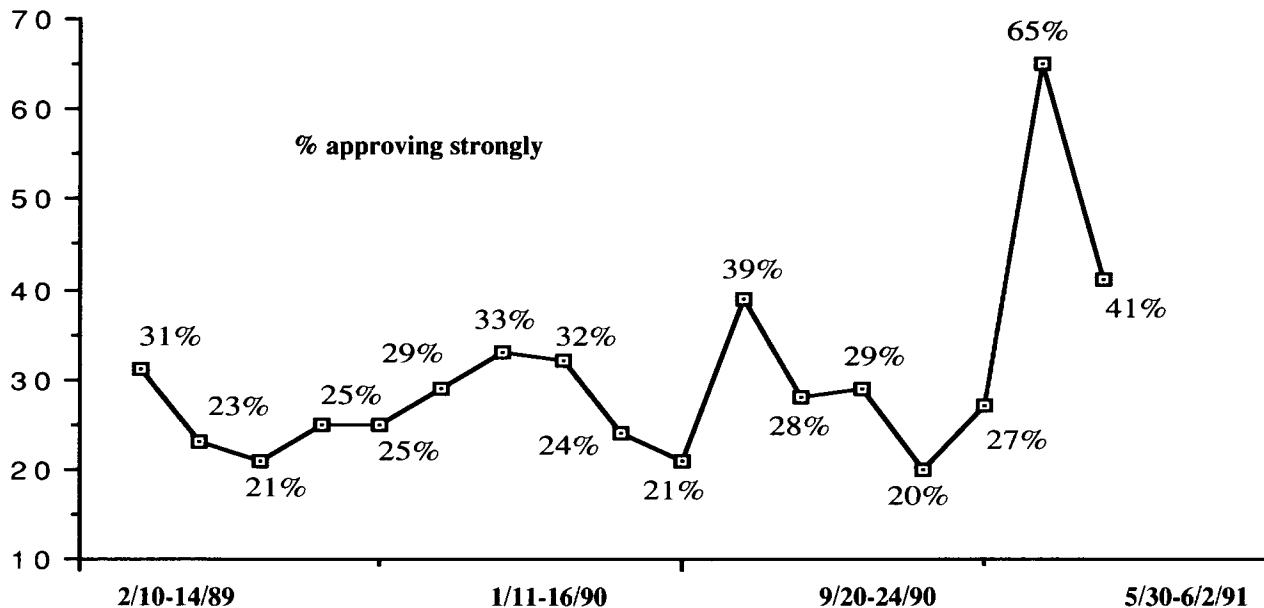
December, 1990



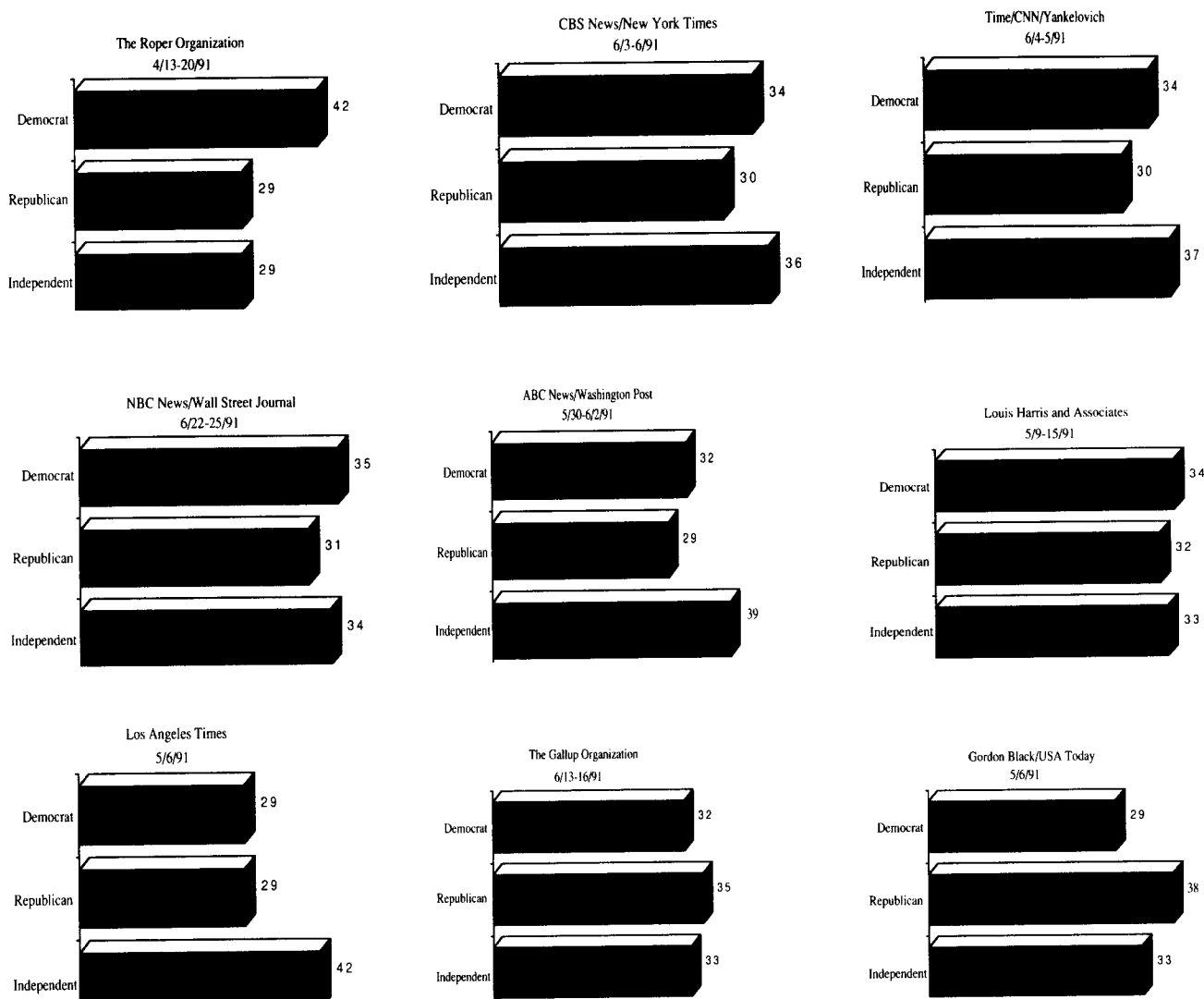
March, 1991

Question: Do you approve or disapprove of the way George Bush is handling his job as President? Is that approve/disapprove strongly, or approve/disapprove somewhat?

Note: Surveys by ABC News/Washington Post.



LATEST READINGS ON PARTY IDENTIFICATION



Note: Gallup figures shown here are based on a single telephone survey. Gallup usually reports its party ID trend based on the combined results of all personal-interview surveys in a quarter. The figures reported here should not be compared to Gallup's quarterly trend.

Questions: [Roper] Regardless of how you may have voted in the past, what do you usually consider yourself—a Democrat, a Republican, some other party or what?; [CBS News/New York Times] Generally speaking, do you usually consider yourself a Republican, a Democrat, an Independent, or what?; [Time/CNN/Yankelovich Clancy Shulman] Are you a Democrat, Republican, or Independent?; [NBC News/Wall Street Journal] Generally speaking, do you think of yourself as a Democrat, a Republican, an Independent, or something else?; [ABC News/Washington Post] Generally speaking, do you usually think of yourself as a Democrat, a Republican, an Independent or what?; [Louis Harris & Associates] Regardless of how you might vote, what do you usually consider yourself—a Republican, a Democrat, an Independent, or what?; [Los Angeles Times] Regardless of your party registration or how you have voted in the past, do you usually think of yourself as a Democrat, or a Republican, or an Independent, or as something else—or don't you think of yourself in that way? [Gallup] In politics today, do you consider yourself a Republican, Democrat or Independent?; [Gordon Black/USA Today] Do you normally think of yourself as a Republican, a Democrat, an Independent, or something else?