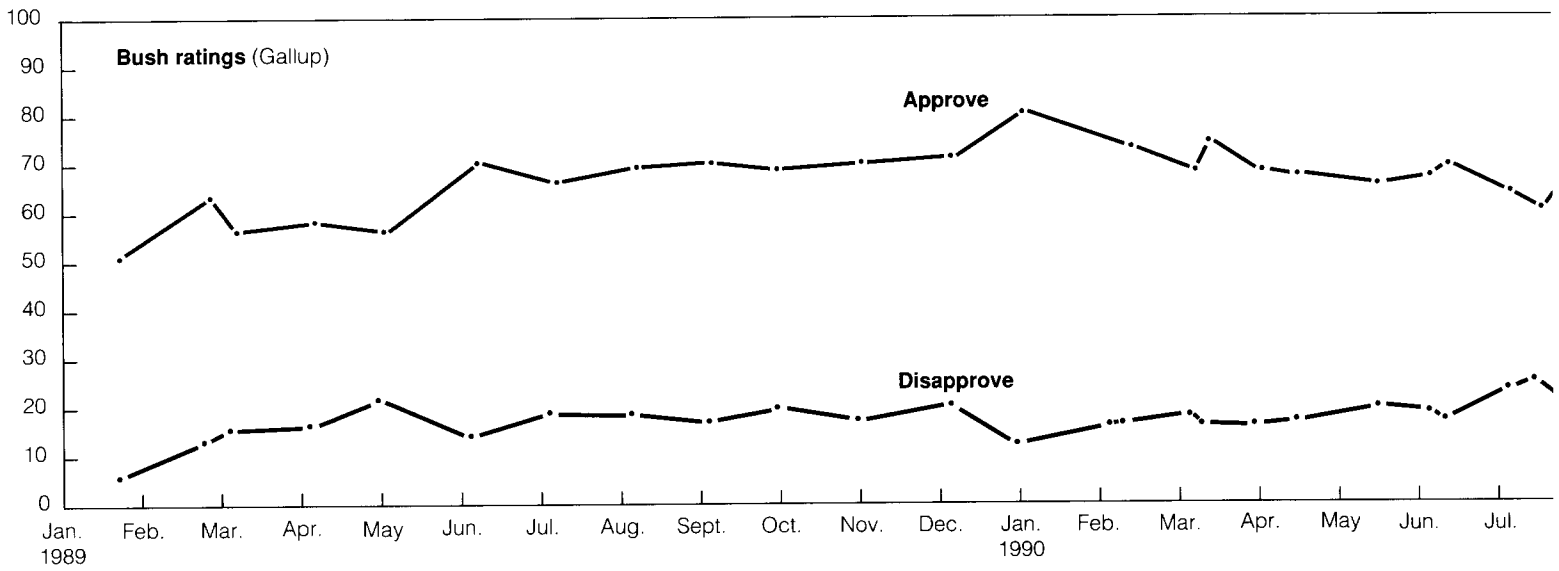


THE BUSH BAROMETER

For the first 36 months of his term, George Bush's approval ratings exceeded his disapproval ratings, typically by a very large margin. Recent polls mark the reversal of his fortunes as the number of those who disapprove surpasses the number who approve.

Question: Do you approve or disapprove of the way George Bush is handling his job as president?



Source: Surveys by the Gallup Organization, latest that of February 19-20, 1992.

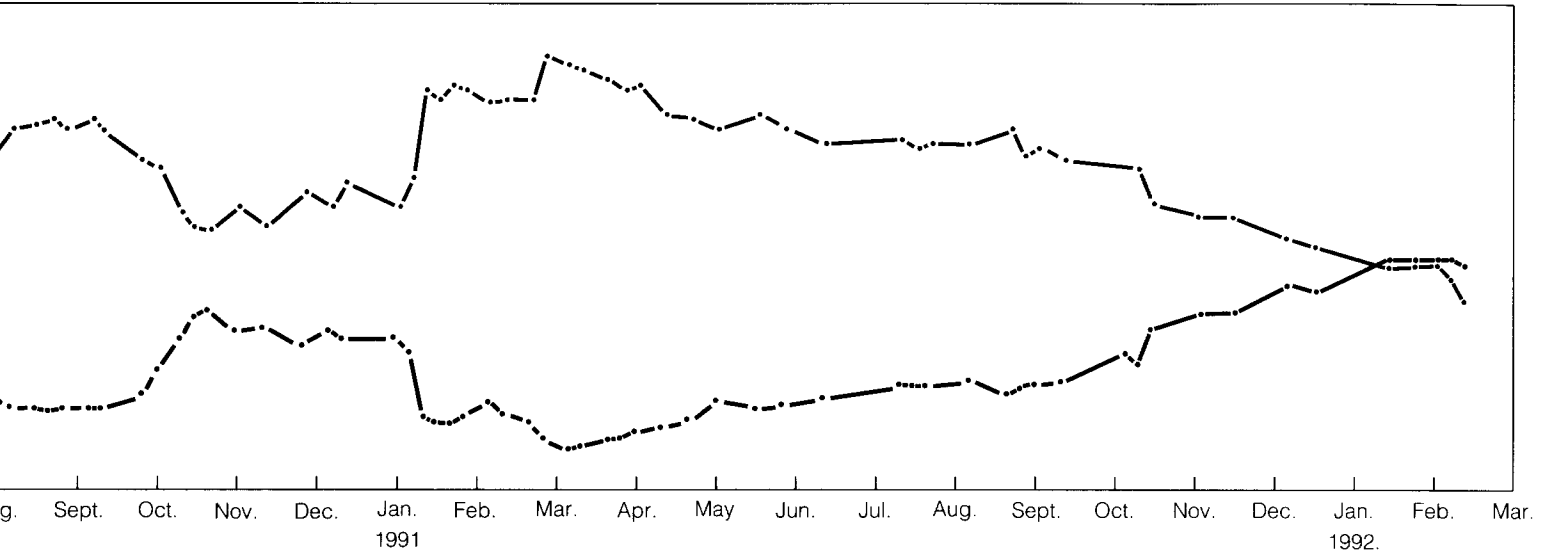
First rating		Approve		Disapprove	
1989	Gallup	1/24-26	51%	6%	
Recent ratings		Approve		Disapprove	
1991	NBC/WSJ	6/22-25	76	21	
	Gallup	7/11-14	72	21	
	YCS/Time/CNN	7/17-18	69	23	
	Gallup	7/18-21	70	21	
	ABC	7/22-25	70	26	
	Gallup	7/25-28	70	21	
	NBC/WSJ	7/26-29	67	25	
	Gallup	8/8-11	71	22	
	Gallup	8/23-25	74	18	
	YCS/Time/CNN	8/27-28	68	22	
	NBC/WSJ	8/28	70	21	
	Gallup	8/29-9/3	68%	22%	
	CBS/NYT	9/3-5	70	19	
	Gallup	9/5-8	70	21	
	ABC	9/13-15	69	26	
	Gallup	9/13-15	68	22	
	YCS/Time/CNN	9/19	65	26	
	NBC/WSJ	9/20-24	64	27	
	LA Times	9/21-24	65	29	
	Gallup	9/26-29	66	25	
	Gallup	10/3-6	65	27	
	Times Mirror	10/3-6	61	28	
	YCS/Time/CNN	10/10	60	30	
	Gallup	10/10-13	66	28	
	CBS/NYT	10/15-18	67	24	
	Gallup	10/17-20	66	26	
	ABC/WP	10/16-21	65	31	
	Gallup/Newsweek	10/24-25	55	30	
	ABC/WP	10/24-29	59	39	

Approve		Disapprove	
NBC/WSJ	10/25-29	63	30
Gallup	10/31-11/3	59	33
Times Mirror	10/31-11/10	55	33
Gallup	11/7-10	56	36
Gallup	11/14-17	56	36
CBS/NYT	11/18-22	51	37
NBC	11/20-21	51	39
LA Times	11/21-24	53	41
Gallup	11/21-24	52	39
YCS/Time/CNN	11/26	46	45
Gallup	12/5-8	52	42
NBC/WSJ	12/6-9	52	41
ABC/WP	12/11-15	47	50
Gallup	12/12-15	50	41
YCS/Time/CNN	12/17-22	50	43
1992 YCS/Time/CNN	1/2	50	43
USA Today/			
CNN/Gallup	1/3-6	46	47
Times Mirror	1/3-6	46	43
CBS/NYT	1/6-8	48	39
ABC/WP	1/13-15	45	52
YCS/Time/CNN	1/16	49	42
Gallup	1/16-19	46	48
CBS/NYT	1/22-25	43	47
ABC/WP	1/29	46	49
YCS/Time/CNN	1/30	44	48
ABC/WP	1/30-2/2	46	50
Gallup	1/31-2/2	47	48
LA Times	1/31-2/3	46	47
Gallup	2/6-9	44	48
Gallup	2/19-20	39	47
YCS/Time/CNN	2/20	42	47
Gallup/Newsweek	2/20-21	42	51

BUSH AND HIS PREDECESSORS			
	After 12th month	After 24th month	After 37th month
Truman (4/45 took office)	50%	—	39%*
Eisenhower (1/53)	68	69	76
Kennedy (1/61)	77	76	—
Johnson (11/63)	69	64	44
Nixon (1/69)	61	56	52
Ford (8/74)	46	—	—
Carter (1/77)	52	43	55
Reagan (1/81)	47	35	55
Bush (1/89)	80	83	39

Note: * Rating after 38th month in office.
Source: Surveys by the Gallup Organization, latest that of February 19-20, 1992.

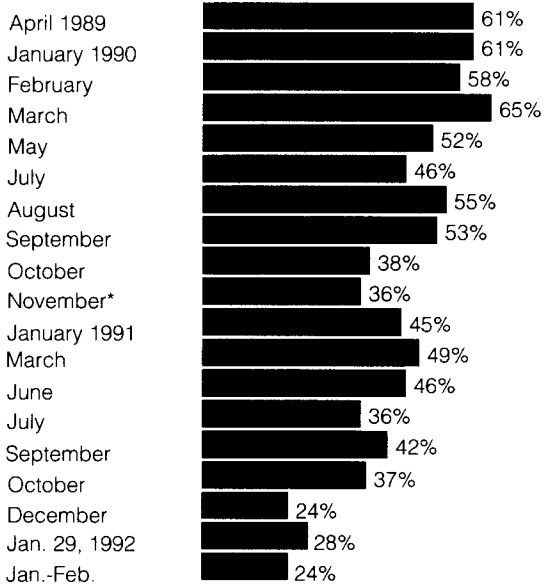
The president's ratings on his handling of the economy remain extremely low, and his rating on foreign policy shows some slippage.



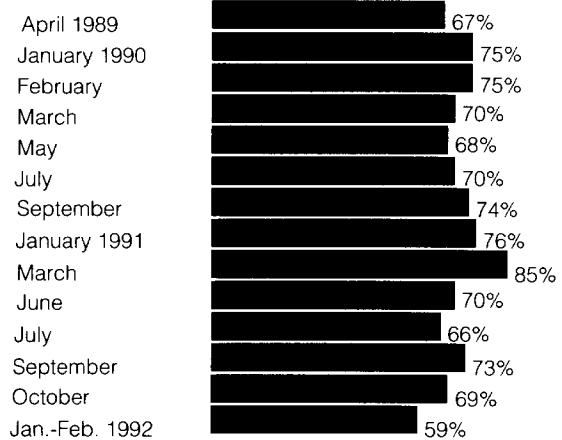
Question: **Do you approve or disapprove of the way Bush is handling...?**

Approve of the way Bush is handling...

The nation's economy



Foreign affairs



Note: * Sample = likely voters.

Source: Surveys by ABC News/Washington Post, latest that of January 30-February 2, 1992.