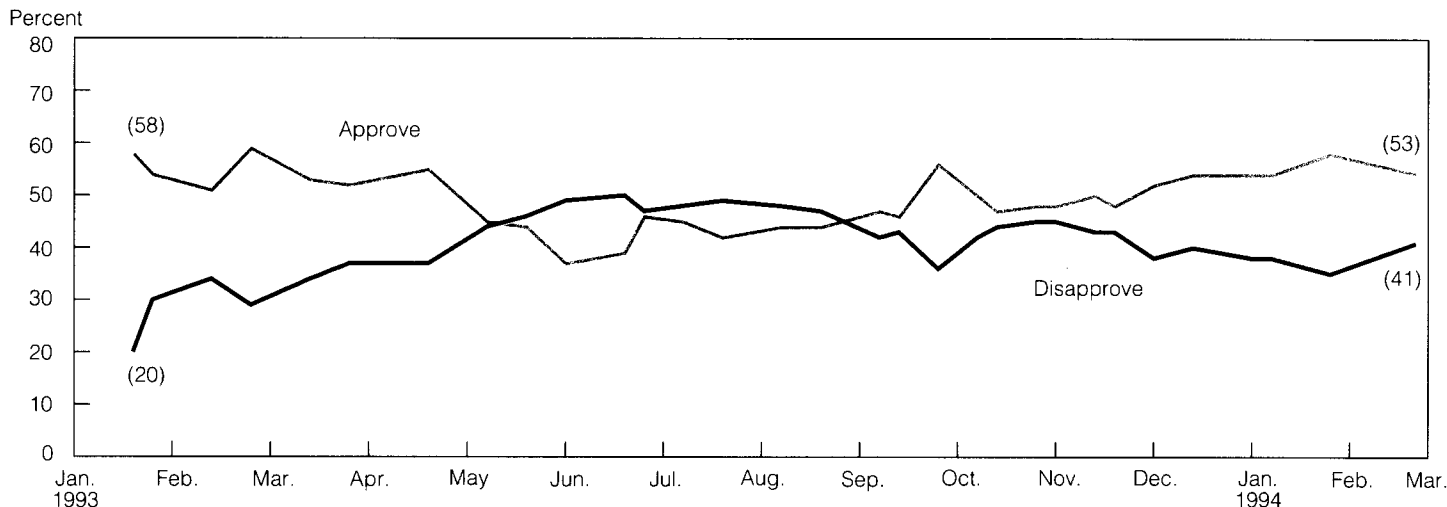


CLINTON'S RATINGS

A month into his second year in office, Bill Clinton's approval rating hovers around 50 percent, his disapproval rating around 40 percent. George Bush's ratings were much higher at this point in his term, but marks for Reagan and Carter were lower.

Question: **Do you approve or disapprove of the way Bill Clinton is handling his job as president?**



Source: Surveys by the Gallup Organization for USA Today and CNN, latest that of February 26-28, 1994.

Recent ratings

Date	Organization	Approve	Disapprove	Date	Organization	Approve	Disapprove
11/2-4/93	Gallup/USA Today/CNN	48%	45%	2/10/94	Yankelovich/Time/CNN	53%	38%
11/3-7	American Viewpoint	43	41	2/15-17	CBS News/New York Times	50	37
11/11	Yankelovich/Time/CNN	42	46	2/26-28	Gallup/USA Today/CNN	53	41
11/11-14	CBS News/New York Times	46	41				
11/11-14	ABC News/Washington Post	49	45				
11/15-16	Gallup/USA Today/CNN	50	43				
11/19-21	Gallup/USA Today/CNN	48	43				
12/2	Yankelovich/Time/CNN	46	43				
12/2-5	Times Mirror Center	48	36				
12/4-6	Gallup/USA Today/CNN	52	38				
12/4-7	Los Angeles Times	55	35				
12/5-7	CBS News	51	37				
12/6-8	Mellman-Lazarus-Lake/Tarrance Group	57	36				
12/11-14	NBC News/Wall Street Journal	56	33				
12/15-19	ABC News/Washington Post	58	40				
12/17-19	Gallup/USA Today/CNN	54	40				
1/5-9/94	ABC News/Washington Post	59	36				
1/6-8	Gallup/USA Today/CNN	54	38				
1/6-13	PSRA/Times Mirror Center	48	35				
1/15-17	CBS News/New York Times	54	35				
1/15-17	Gallup/USA Today/CNN	54	38				
1/15-18	NBC News/Wall Street Journal	60	31				
1/15-19	Los Angeles Times	55	36				
1/17-18	U.S. News & World Report	53	37				
1/17-18	Yankelovich/Time/CNN	54	34				
1/20-23	ABC News/Washington Post	56	34				
1/27-30	PSRA/Times Mirror Center	51	35				
1/28-30	Gallup/USA Today/CNN	58	35				

	Month took office	After sixth month	After thirteenth month
Truman (4/45 took office)	—	75%*	—
Eisenhower (1/53)	—	71	71%
Kennedy (1/61)	—	71	78
Johnson (11/63)	—	75	69
Nixon (1/69)	59%	65	56
Ford (8/74)	71	39	47
Carter (1/77)	—	67	50
Reagan (1/81)	51	60	47
Bush (1/89)	51	66	73
Clinton (1/93)	54	41	53

Note: Latest survey of each month shown. * = after seventh month.
Source: Surveys by the Gallup Organization, latest that of February 26-28, 1994.