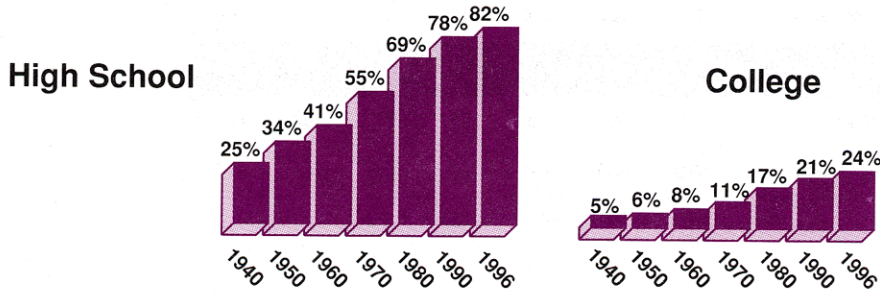


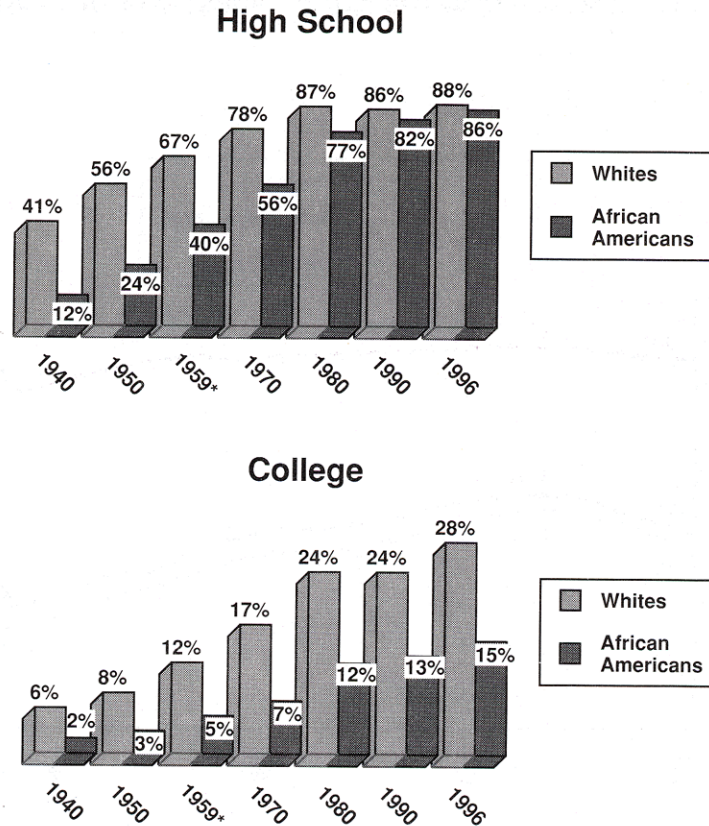
The Ranks of High School and College Graduates Have Grown Steadily Over the Last Half-Century

Percentage of Americans 25 Years Old and Over Completing High School and College



The Education Gap Between Whites and African Americans Declined Sharply for High School Training, Much More Modestly for College Training

Percentage 25-29 Year Olds Completing High School and College

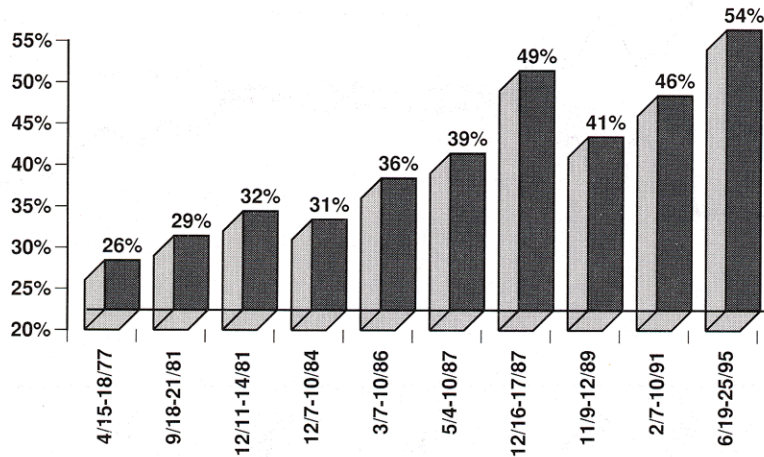


*1960 data were not available; therefore 1959 is shown here.

Source: 1947 and 1952-1996 March Current Population Survey, and 1940 Census of Population.

Americans' Participation in Service Activities Has Climbed Since the 1970s

Questions: Do you, yourself, happen to be involved in any charity or social service activities, such as helping the poor, the sick, or the elderly?*



* Question varies slightly in each asking.

Source: Surveys in 1977-1989, by the Gallup Organization; surveys in 1991 and 1995, by Princeton Survey Research Associates.

Real, Per Capita Charitable Giving Has Continued to Rise

	Total Giving (in billions/current dollars)	Per Capita (current dollars)	Total giving (in constant 1993 dollars)	Per Capita (constant 1993 dollars)
1930	\$1.2	\$10	\$10.4	\$88
1940	\$1.4	\$11	\$14.4	\$112
1950	\$4.5	\$30	\$27.0	\$179
1960	\$10.4	\$58	\$50.7	\$280
1970	\$19.2	\$94	\$71.4	\$349
1980	\$48.6	\$213	\$85.5	\$376
1990	\$111.9	\$448	\$124.2	\$496
1995	\$144.0	\$547	\$136.8	\$522

Source: 1930-1993: US Bureau of the Census, *Statistical Abstract of the United States, 1995-96*, p. 396; idem, *Historical Statistics of the United States, Colonial Times to 1970*, p. 359. 1995: National Report of the American Association of Fund Raising Counsel/Trust for Philanthropy. Constant dollar figures based on calculations from CPI data provided by the Bureau of Labor Statistics.